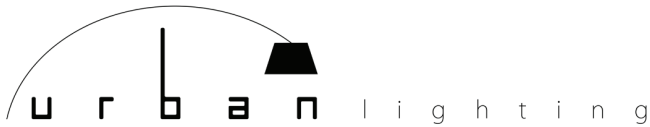
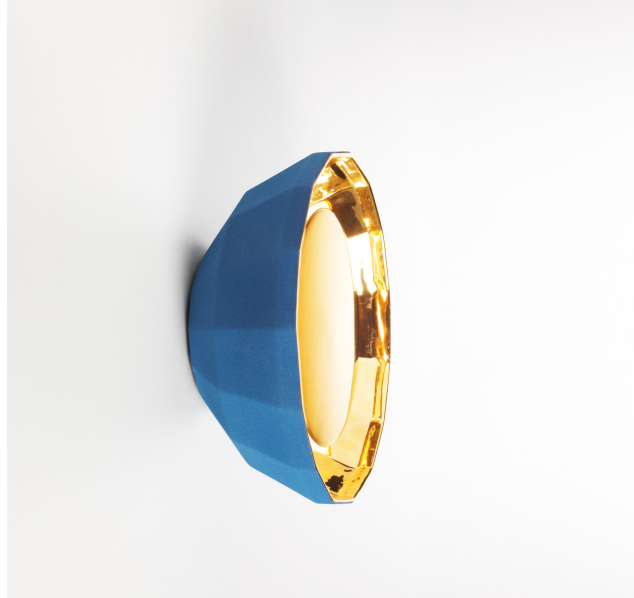


SCOTCH CLUB

Xavier Mañosa & Mashallah, 2013

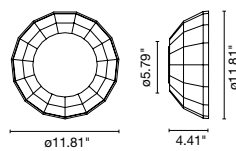


619.232.6064 | sales@urbanlighting.net | 301 4th Avenue | San Diego, CA 92101

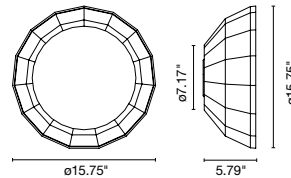
Ceramic diffuser with an interior of brilliant white enamel or gold. A lacquered metal reflector shields the light.

- White-white
- White-gold
- Blue-white
- Blue-gold
- Terracotta-white
- Terracotta-gold
- Black-white
- Black-gold

Scotch Club A 30



Scotch Club A 40



Scotch Club A 30

☐ 2x G9 Bipin T4 40W

Scotch Club A 40

☐ 2x E26 CFL T2 18W

☐ 2x G24 q-2 T4 18W

Scotch Club A 40 allows one to regulate the light



Dry locations only

