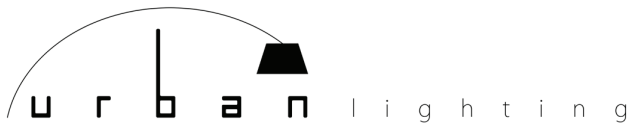


# Spokes, suspension design Studio García Cumini 2014

FOSCARINI



619.232.6064 | sales@urbanlighting.net | 301 4th Avenue | San Diego, CA 92101



The hanging lamp Spokes was inspired by images of antique oriental lanterns and less exotic aviaries. The designers observed the spokes of a bicycle wheel and this is what gave the lamp its name. The result is soft shapes and a lightweight lamp which holds the light allowing it to filter out into the room. The lightweight quality of the project combines with the solidity of its forms in metal rod and the practicality of its LED light source allowing it both to light up surfaces perfectly and project an interplay of light and shade onto the walls with a magical multiplication

effect. The development of the project into two forms, two sizes and two colour variants highlights its versatility making Spokes particularly suitable for both living spaces and public venues and ideal in large architectural contexts as well in its multiple compositions.

# Spokes, suspension technical info

FOSCARINI

## Description

A collection of suspension lamps with two shapes and two colours for 4 different solutions. The opaque epoxy powder varnished steel spokes are attached to the upper part by two ABS/polycarbonate discs and to the lower part of the aluminium module that acts as the housing and heat sink for the two LED boards. The electric cable that powers the boards is invisible, because it is housed in one of the spokes. The suspension cable is in stainless steel and the electric cable is transparent. The ceiling rose and zinc-coated metal bracket has a shiny white batch dyed ABS covering.

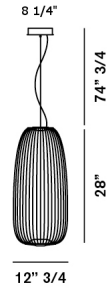
**Materials** Varnished steel and aluminium

**Colors** white, yellow



## Model

### Spokes 1



### Weight

net lbs: 11,20  
gross lbs: 19,70

### Packaging

vol. cub. ft.: 8,254  
n. boxes: 2

### Bulbs

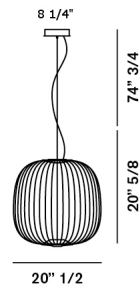
LED included 38,5W 2700°K 2780 lm CRI>90  
80lm/W

**Dimmable Possible configurations:**  
On-Off/1-10V

### Certifications



### Spokes 2



### Weight

net lbs: 10,85  
gross lbs: 21,73

### Packaging

vol. cub. ft.: 13,020  
n. boxes: 2

### Bulbs

LED included 38,5W 2700°K 2780 lm CRI>90  
80lm/W

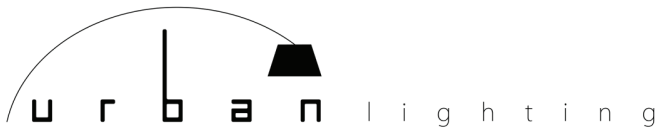
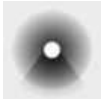
**Dimmable possible configurations** On-Off / 1  
10V

### Certifications



## Brightness light

diffused and direct down light



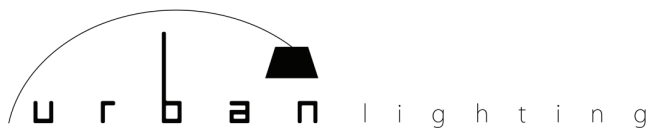
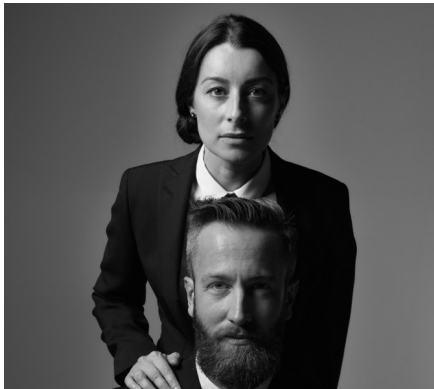
619.232.6064 | sales@urbanlighting.net | 301 4th Avenue | San Diego, CA 92101

# Spokes, suspension designer+collection

FOSCARINI

## Studio García Cumini

Established in Udine (Italy) in 2012, the García Cumini Associati studio brings together the consolidated experience of its two founders in the design industry. The company merges two multi-disciplinary cultures and creates designs, art installations, artistic direction, graphic design and brand identity, developed with the aim of making people fall in love with a given product or company. The main philosophy and ethic of the studio is to bring to life an intuition or a poetic vision, assessing projects from every angle, with a keen eye on technology and the client's artistic expressions and style.



619.232.6064 | [sales@urbanlighting.net](mailto:sales@urbanlighting.net) | 301 4th Avenue | San Diego, CA 92101

## Spokes Collection



suspension